

Collection
产品目录

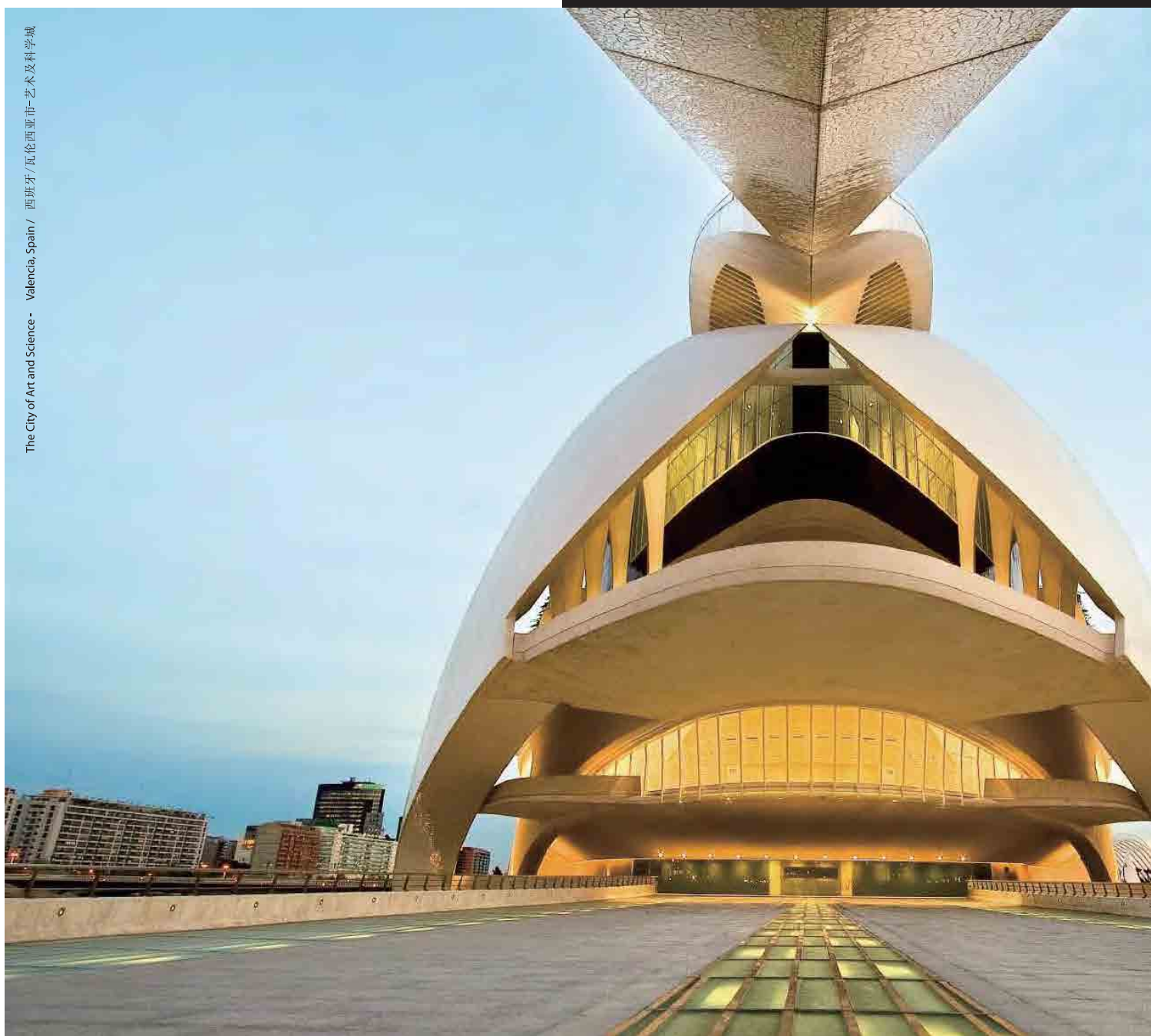


LEVANTINA by
MAKISH

LEVANTINA
THE NATURAL STONE COMPANY

MKS 美琦石业
MAKISH STONE

The City of Art and Science - Valencia, Spain / 西班牙 / 瓦伦西亚市-艺术及科学城



LEVANTINA by MAKISH



LEVANTINA

LEADER IN THE NATURAL STONE INDUSTRY

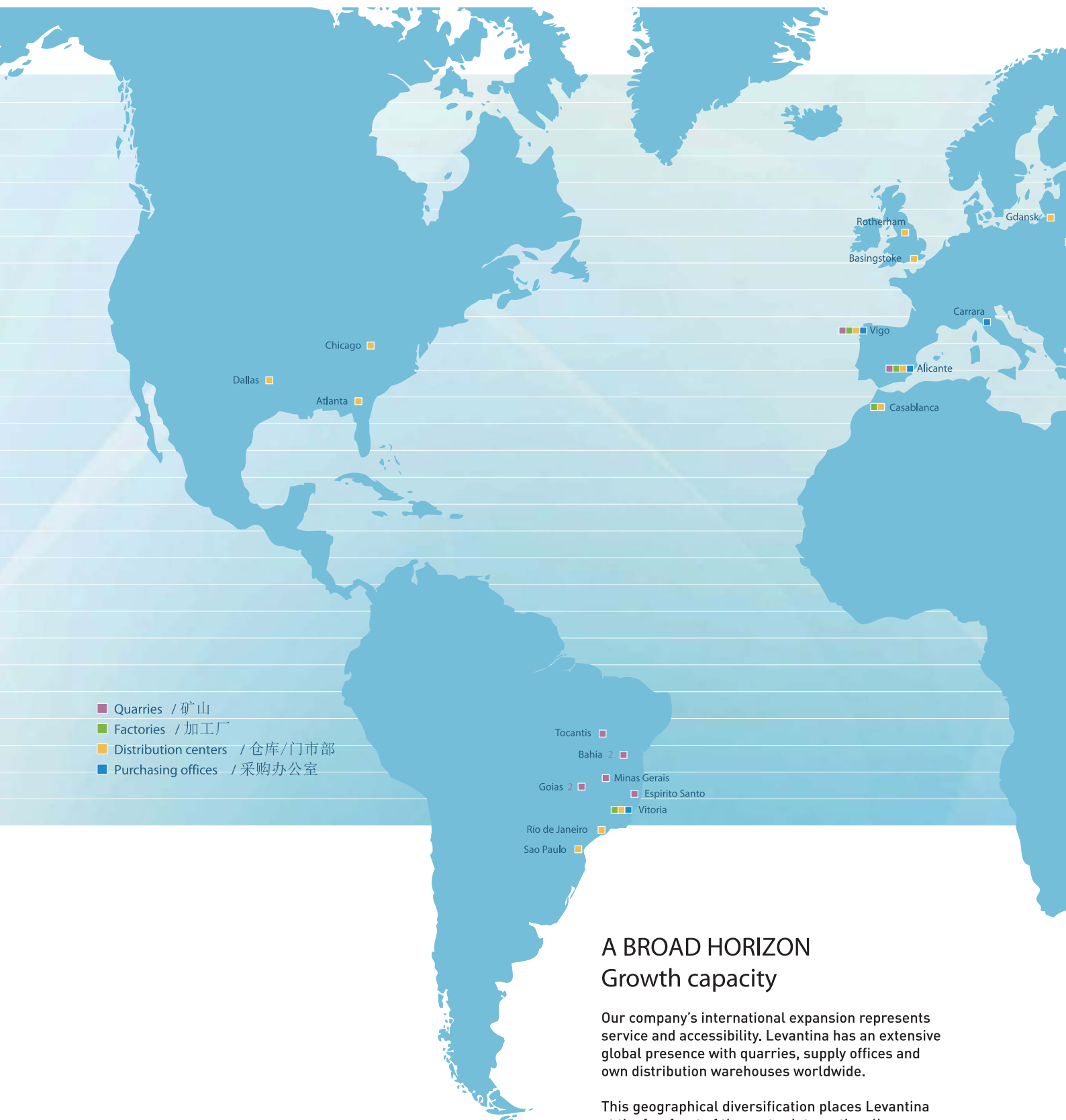
Levantina is a multinational company with Spanish origins and a worldwide leader in the Natural Stone industry. Since it originated in 1959, the company has grown continuously and undergone significant international expansion, becoming a clear reference in the Natural Stone market and also contributing to innovation and technology within the sector.

Among our greatest assets is highlighted our great capacity response, due to our 63 (own) quarries; Levantina is situated strategically, because of the competitiveness and innovation of its 12 factories with the most advanced technology; The accessibility allows our 40 warehouses to self-distribute; and finally, the international presence thanks to the exportation to more than 93 countries.

引领天然石材业

LEVANTINA是一家源于西班牙的大型跨国公司，在天然石材行业处于世界领先地位。自1959年成立以来，公司业绩不断稳步增长，并在世界范围内扩展迅速，在产品和服务方面不断力求创新和发展，是国际石材行业的领军企业。

我们最宝贵的财富在以下几个方面：突出的市场运营反应及组织能力，尤其表现在我们拥有的63个矿山开采运作中；12个加工基地，开发了最先进的加工技术，具有独特的创新能力和竞争能力；拥有的世界各地40个分销仓库，强大的资源及服务优势，产品出口93个国家和地区。



A BROAD HORIZON Growth capacity

Our company's international expansion represents service and accessibility. Levantina has an extensive global presence with quarries, supply offices and own distribution warehouses worldwide.

This geographical diversification places Levantina at the forefront of the sector internationally, maximizing our capacity for growth by making us more competitive.



辽阔的视野 发展潜能

LEVANTINA在全球范围内拥有的多座矿山资源、专业营销场所和配送仓库，地域多元化的发展战略使得LEVANTINA具有强大的竞争优势和全球广大的拓展能力。

Makish (Yunfu) stone co., Ltd. is an exclusively foreign-owned enterprise under jurisdiction of Hong Kong Makish Group with a registration capital of RMB 30,000,000. Our company is specializing at research & development, manufacturing, engineering project finish matching and stone sale. We have a regular inventory of stones up to two hundred thousand of square meters, including Crema Marfil, Crema Baltico, Amarillo Mares, Amarillo Triana and Marron Emperador. All the high-quality stone from quarry of LEVANTINA stone group in Spain. Makish (Yunfu) stone co., Ltd. is the most professional supplier for marble project material selling, producing, service in the south of China.

LEVANTINA by MAKISH



美琦（云浮）石业有限公司是香港美琦集团所属的一家外商独资企业，注册资金3000万元，公司专注于石材产品的经营销售、设计开发、工程配套精加工等服务。主营产品有西班牙米黄、巴黎米黄、佰丽黄、黄金天龙、深啡网等(Crema Marfil, Crema Baltico, Amarillo Mares, Amarillo Triana, Marron Emperador)，常年库存量在二十万平方米以上，高品质的石材产品全部来自西班牙LEVANTINA（诺万天纳）石材集团旗下矿山，是华南地区最具规模化、专业化的工程材料采购、加工配套服务商。

With the strategic cooperation with Spanish LEVANTINA stone Group, Makish (Yunfu) stone co., Ltd, bases upon Yunfu market, looking for development together, Now the No:1 and the best of marble exhibition hall in Asia invested by Spanish LEVANTINA stone group has been ceremoniously opened under the independent operation and management of Makish Marble.

With Makish Marble wide sale channel, advanced management and business integrity in marble industry, we have created a new concept for marble world international wholesale center as "LEVANTINA BY MAKISH stone supermarket".

Makish Marble has become one of most important tactic cooperation partner of LEVANTINA stone group in his globalization development.

美琦石业携手西班牙LEVANTINA（诺万天纳）石材集团战略合作，立足云浮，共赢发展。由西班牙LEVANTINA（诺万天纳）石材集团投资，美琦石业独立运营管理的LEVANTINA BY MAKISH亚洲第一石材专业展厅隆重开放；独创性打造“LEVANTINA BY MAKISH石材超市”新概念的海岸、石通天下专业卖场，结合美琦石业广大的营销渠道、先进的经营理念和多年友好贸易诚信，成为LEVANTINA（诺万天纳）石材集团在国际化发展布局中极其重要的战略合作伙伴。

MKS 美琦石业
MAKISH STONE



尊贵与生俱来

Honored

Born with elegance, accumulated

品质亿年积淀

Quality

during millions of years with high quality



LEVANTINA by MAKISH

Makish (Yunfu) stone co., Ltd, always insists on the developing strategy of global perspective, macro layout, resource integration, inner development and introduction of foreign capital, Mutual Benefit and Multi-win. We are holding the managing concept of “product and culture coexistence, quality and brand name coexistence, being a leader in value and service”. Our tenet is “Shining quality, Sunshiny service”. Taking the opportunity of the transformation and upgrading in the stone industry, Makish Marble has gradually realized the idea “When you are looking for spanish marble, Yunfu Makish marble is a place you could not miss.”

美琦（云浮）石业有限公司始终坚持全球视野、宏观布局，整合资源、优势互补，内修外引、互惠共赢的发展战略；以 “产品与文化并存，品质与品牌同在，价值与服务领先” 的经营理念，秉承 “阳光品质、阳光服务” 的企业服务宗旨；结合石材产业转型升级、做大做强的政策机遇，将逐步实现 “买西班牙石材，到中国云浮” 的战略构想。



美琦高层陪同西班牙领事馆参赞、Levantina集团CEO等客人参观美琦公司



Collection

我们的产品

LEVANTINA
THE NATURAL STONE COMPANY

MKS 美狮石业
MAKISH STONE

Natural Stone

TECHLAM®
Ceramics



4

About
关于LEVANTINA



8

About
美琦石业



12

Crema Marfil
西班牙米黄



14

Marble Collection
大理石产品系列



16

Limestone Collection
石灰石及砂岩产品系列



20

Granite Collection
花岗岩产品系列



28

Ceramics
陶瓷板系列

Crema Marfil

Marble

西班牙米黄

大理石



Crema Marfil Polished / 西班牙米黄磨光板

CREMA MARFIL IVORY



CREMA MARFIL ALBA



CREMA MARFIL CLASSIC



Crema Marfil from Levantina's Coto quarry is internationally renowned as the best cream marble. Its rich golden cream colour, excellent polishing finishes, excellent physical qualities and impact resistance, combined with a very low coefficient of water absorption make it the preferred choice for all architects and project owners.

LEVANTINA的西班牙米黄Coto矿山是世界公认最好品质及规模的米黄色大理石，它具备了柔和完美的色调、美仑美奂的光泽，优良的高硬度材质、吸水率低等特点，一直是国际上设计师和建筑发展商们最喜爱的首选材料。

Trama & Sunset

Thanks to be the world's largest marble reserve and based on the latest techniques of extraction, industrialization and selection, Levantina is now able to launch a new selection of products. Trama and Sunset are our latest proposal, which reach out to massive projects and show the excellence and distinction of Spanish marble.

IDEAL FOR WIDE SPACES AND PUBLIC AREAS

Hotels & resorts, airports & train stations, superstores and shopping centers, luxurious residences, buildings & public institutions.

拥有全世界最大的大理石储备量并掌握最新开采技术，工业化和筛选技术，使得Levantina 能够选择最新的和多样的材料。Trama 和Sunset 是我们最新的计划，这是能够显示出西班牙大理石卓越和优异性能的重大项目。

大型空间和公共领域的理想选择

酒店和度假村，机场和火车站，超市和商场，豪华住宅，建筑和公共设施。



TRAMA



SUNSET

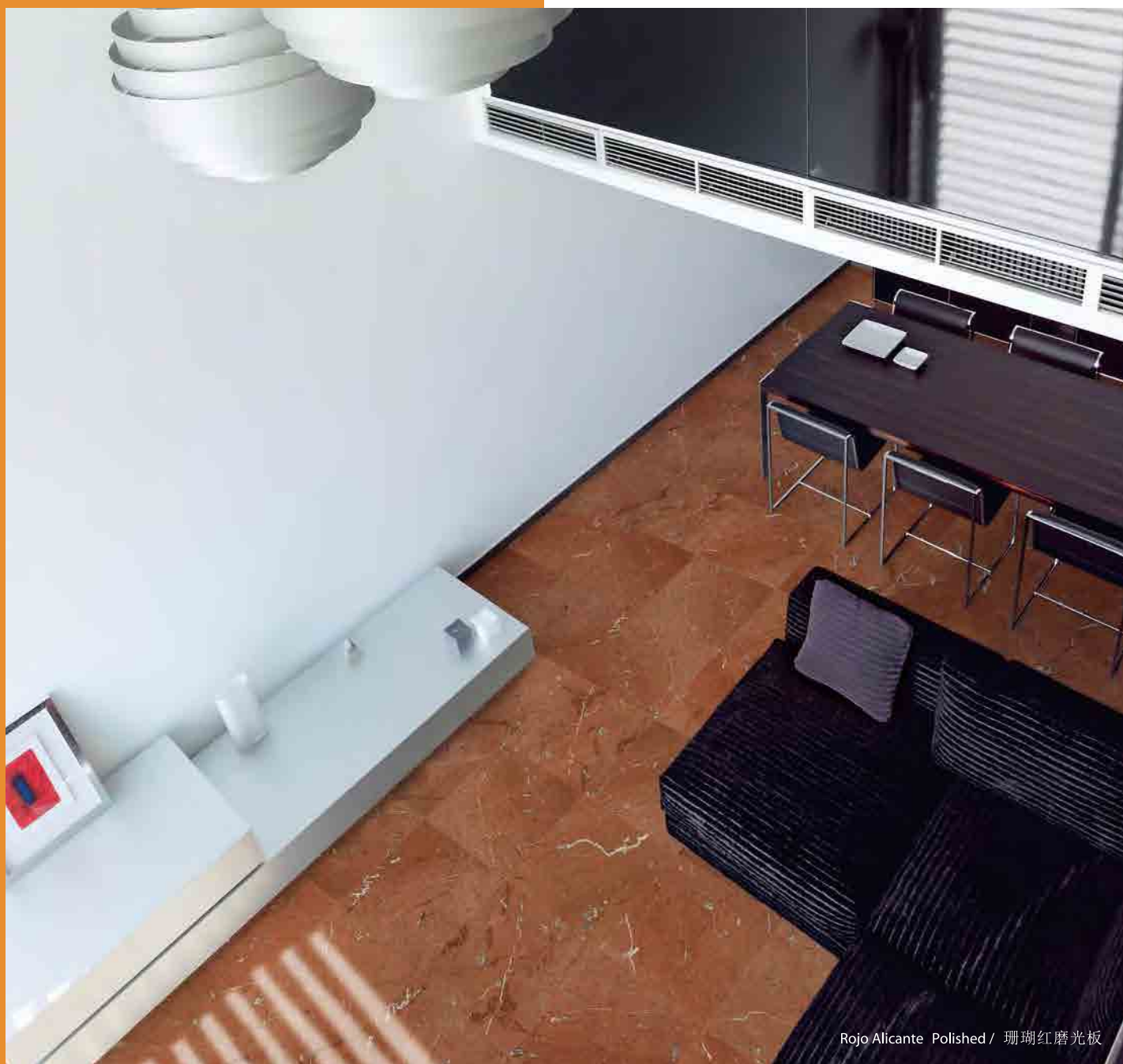


Sunset Polished / Sunset 系列磨光板

Colours may vary from printed representations / 实物的颜色可能和图片的颜色有差异

Natural Stone

Marble / 大理石



Rojo Alicante Polished / 珊瑚红磨光板

MISTRAL BEIGE



CREMA BÁLTICO



SPANISH GOLD



ROSA ZARCI



LIGHT EMPERADOR



MARRÓN EMPERADOR



ROJO ALICANTE



ROJO CORALITO



ROJO LEVANTINA



NEGRO MARQUINA



FORMATS / 规格

30,5 x 30,5 x 1 cm
40 x 40 x 1,5 cm
40 x 40 x 2 cm
45,7 x 45,7 x 1,5 cm
60 x 30 x 2 cm
60 x 40 x 2 cm
60 x 60 x 2 cm
2 cm
3 cm

FINISHES / 处理面

POLISHED / 磨光面
HONED / 亚光面
AGED / 仿古面
BUSHHAMMERED / 荔枝面
ROUGH / 毛面

Some colours are not available in all formats / 某些品种可能只生产部分规格
Colours may vary from printed representations / 实物的颜色可能和图片的颜色有差异

Natural Stone

Limestone and other stones

石灰石及其它材料



Niwala Crema / Niwala 白砂

Natural Stone - Limestone Collection / 石灰石及砂岩产品系列

CAPRI



MARBELLA



LUNA



NIWALA WHITE



NIWALA YELLOW



NIWALA YELLOW



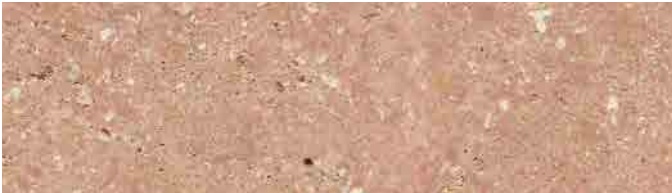
GOLDEN SHELL



NIWALA ROSA



TOSCA ROSA



CREMA ANTARES



FORMATS / 规格

30,5 x 30,5 x 1 cm
40 x 40 x 1,5 cm
40 x 40 x 2 cm
45,7 x 45,7 x 1,5 cm
60 x 30 x 2 cm
60 x 40 x 2 cm
60 x 60 x 2 cm
2 cm
3 cm

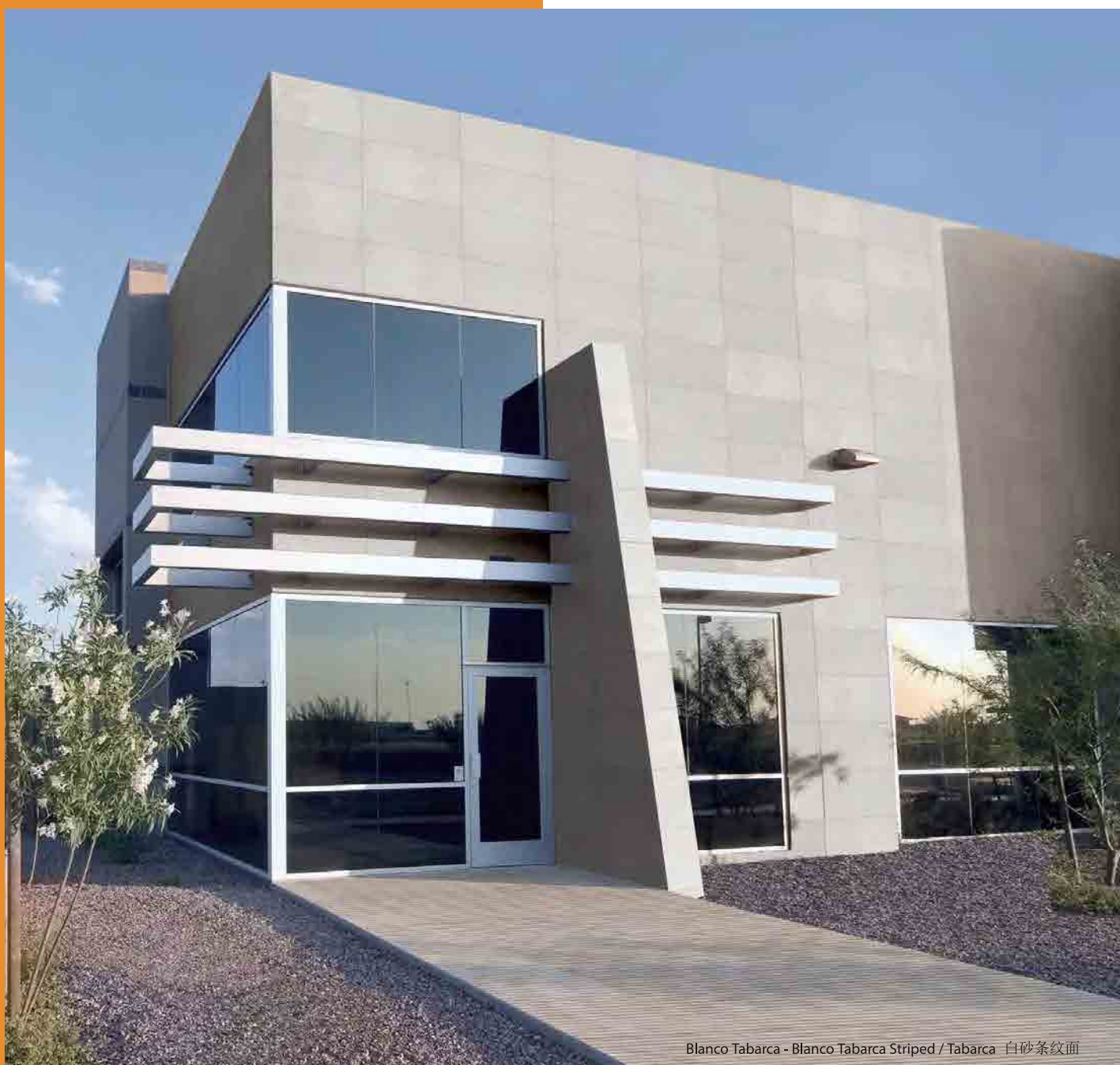
FINISHES / 处理面

HONED / 亚光面
ROUGH / 毛面

Some colours are not available in all formats / 某些品种可能只生产部分规格
Colours may vary from printed representations / 实物的颜色可能和图片的颜色有差异

Natural Stone

Mediterraneo & Urban
Collection



Blanco Tabarca - Blanco Tabarca Striped / Tabarca 白砂条纹面

Mediterraneo Collection

Levantina's Mediterraneo Collection offers a selection of new materials: Blanco Altea, Blanco Tabarca and Blanco Tabarca Striped. These are the three new proposals, ideal on exteriors thanks to their excellent physical qualities, durability and low porosity.

As well as their unbeatable aesthetic qualities, these materials have high thermal resistance and are one of the best options in variable atmospheric conditions.

Levantina 的地中海系列（ Mediterraneo ）为您提供新材料的选择机会。Blanco Altea、Blanco Tabarca 和 Blanco Tabarca Striped 是我们向您推荐的三款理想的新式石材，由于它们具有卓越的物理性能、耐用度和低孔隙度，最适合于户外使用。除了无与伦比的美学特质，这些石材还拥有优异的耐热性，能够适应多变的气候条件。

Urban Collection

Levantina's Urban Collection comes from the different treatments applied to our products, designed mainly for use on exterior building coverings in urban environments.

Levantina 的都市系列是由我们产品经过不同处理加工而成的，主要用于城市建筑的外墙。

SELF-CLEANING TREATMENT:

The incorporation of nanotechnology degrades organic materials (pollution, etc) that are deposited on exterior coverings, leaving the rainwater to self-clean it.

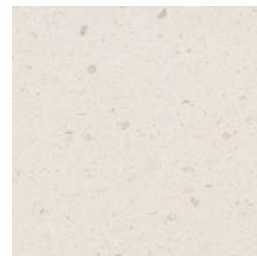
自动清洁处理：

纳米技术可以降解附着在表面的有机物（污染物等等），这样便于建筑物外表随着雨水的冲刷实现自动清洁。

Tratamiento auto limpiante
自动清洁处理：



Before / 前



After / 后

ANTI-GRAFFITI TREATMENT:

Treatment is applied during manufacturing process.

Neither the color nor the finish will modify.

No limitation to format.

防涂鸦处理：

在生产过程中进行防涂鸦处理。

无论什么规格的产品，其本身的颜色和成品面在擦掉涂鸦后都不会改变。

FORMATS / 规格

40 x 40 x 2 cm	60 x 40 x 2 cm
40 x 40 x 3 cm	60 x 40 x 3 cm
60 x 30 x 2 cm	2 cm
60 x 30 x 3 cm	3 cm

Colours may vary from printed representations / 实物的颜色可能和图片的颜色有差异

Natural Stone

Granite / 花岗岩



Natural Stone - Granite Collection / 花岗岩产品系列



BLANCO POLAR



GRIS SALANGA



GRIS SERENA



PEDRAS SALGADAS



BLANCO MIÑO



BLANCO CRISTAL



Natural Stone

Granite / 花岗岩

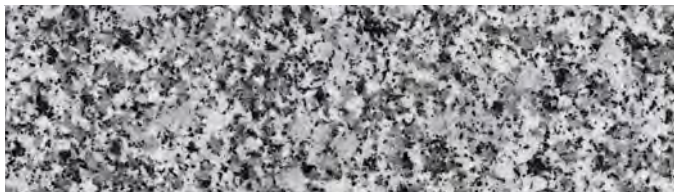
GRISAL



CREMA JULIA



BLANCO RAFAELA



ROSAVEL



SILVESTRE GT



MONDARIZ



SILVER WHITE



ROSA PORRINO



BLANCO CASTILLA



SHIVAKASHI



BLANCO PERLA



AMBAS WHITE



Natural Stone - Granite Collection / 花岗岩产品系列

RIVER WHITE



VERDE IMPERIAL



LENNON



TROPICAL SAVANA



VERDE COTO



UBATUBA GREEN



GREEN LARA



KASHMIR GOLD



VERDE CASCADE



JUPARAIBA



ROYAL GREEN



MULTICOLOR RED



Natural Stone

Granite / 花岗岩



MARRÓN COHIBA



IMPALA BLACK



ANGOLA LABRADORITE



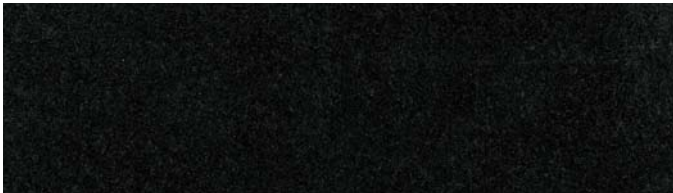
ANGOLA BLACK



ABSOLUTE INDIAN BLACK



ZIMBABWE BLACK



FINISHES / 处理面

- POLISHED / 磨光面
- HONED / 亚光面
- LEATHER / 仿皮面
- RIVERWASHED / 水洗石
- SANDBLASTED / 喷砂面
- BUSHHAMMERED / 荔枝面
- FLAMED / 火烧面
- ROUGH / 毛面

FORMATS / 规格

- 2 cm
- 3 cm

Colours may vary from printed representations / 实物的颜色可能和图片的颜色有差异

Natural Stone

Granite / 花岗岩



Lennon Polished / Lennon 磨光板

Brazil / 巴西

LENNON



GIALLO ORNAMENTAL



DELICATUS



NAPOLI



GENESIS



BIANCO ROMANO



Natural Stone - Granite Collection / 花岗岩产品系列

PICASSO



CARNAVAL



PORTO FINO



SOLARIUS



PEACOCK



BOREAL



YELLOW RIVER



SANTA CECILIA CLASSICO



G. V. VINTAGE



MARISMA



STAR BEACH



GIALLO VICENZA



Colours may vary from printed representations / 实物的颜色可能和图片的颜色有差异

TECHLAM®

Ceramics / 陶瓷



Madeira Fresno

TECHLAM® MAKES THE REFURBISHMENT EASIER

TECHLAM® is a porcelain slab, only 3 mm thick and 7,1 Kg/m² weigh, and can be up to 1000 x 3000 mm panels.

It is a new practical concept aimed at materializing your most ambitious projects applications. Its use is extending to interior walls and floors coverings, to aseptic areas as hospitals and laboratories, as well as façades, tunnels and undergrounds.

The TECHLAM® 3+ (3 mm thick + fiberglass mesh reinforcement) underlines the suitability of this material for refurbishments, due to its minimum thickness is reinforced by a fiberglass at the back that enables a balanced distribution of forces on the porcelain tile. TECHLAM® can be installed directly over existing flooring, making the height of the surface to be increased only 3 mm. In this way, it is no necessary the levelling of other floors and doors. This easy and clean installation saves time and money during the refurbishment.

TECHLAM® 使重铺更加简单

TECHLAM® 是一种厚度为 3 mm，重量为 7,1 Kg/m² 的陶瓷板，这种板的规格可以达到 1000 x 3000 mm。

这个产品是您各种大型工程和计划的最新选择：路面和室内地板、无菌区域（医院和实验室）、面墙、隧道和地铁。

TECHLAM® 3+（3 mm 厚度+玻璃纤维加固）规格更加突出了这种材料在整修方面的适应性，使瓷砖承受的力度均衡分布。TECHLAM® 可以直接铺在现有的地板上，而仅使现有的地面增高 3 mm。因此，其它地面和门都不需改动。这种既方便又卫生的铺设方式节省了重铺工程的时间和成本。

CHARACTERISTICS / 特性

Versatility / 多功能性

Hygienic surface / 表面卫生

Alterations in colour / 颜色不变

Impermeability / 不渗透

Resistance to chemical products / 抗化学物质

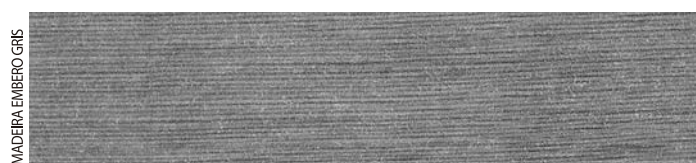
Environmental-friendly / 环保

Resistance to bending, fire and high temperatures / 抗弯曲

Resistance to wear and tear, scratching and abrasion / 耐磨、抗刮、耐腐蚀



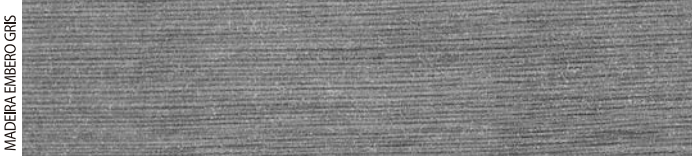
Madeira Collection



Zahir Collection



Vulcano Collection

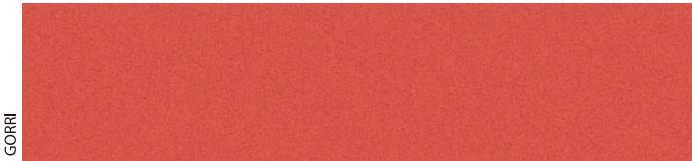


Hydra Collection



TECHLAM®
Ceramics / 陶瓷





GORRI



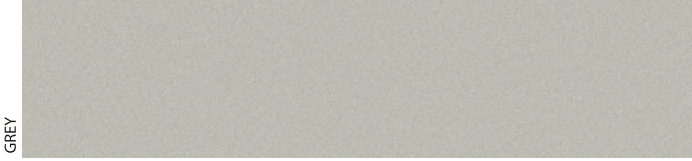
CLAY



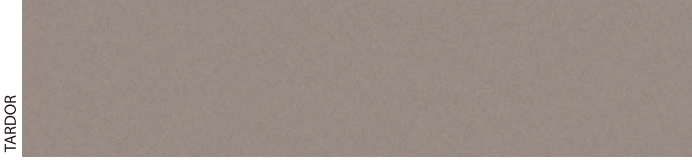
CELESTE



BLAU



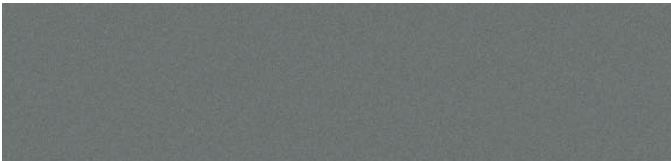
GREY



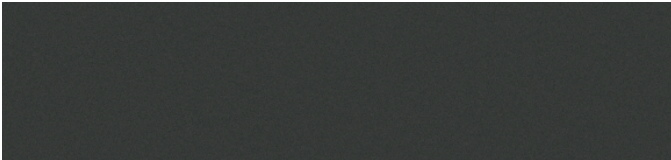
TARDOR



ANTRACITA



CENDRA



BLACK

FINISHES / 处理面

Madeira, Zahir, Vulcano & Hydra Collection

MATTE / 亚光面

Basic Collection

BRIGHT / 亮面

MATTE / 亚光面

NON-SLIP / 防滑面

FORMATS / 规格

100 x 300 cm

100 x 100 cm

50 x 100 cm

50 x 50 cm

30 x 50 cm

20 x 100 cm Only Madeira / 仅 Madeira

THICKNESS / 厚度

3

3+

3+3

3+3+3

Colours may vary from printed representations / 实物的颜色可能和图片的颜色有差异

西班牙米黄 Crema Marfil

全球供应商

LEVANTINA 亚洲第一展厅

地址：广东省云浮市云城区罗沙过境路(石通天下侧)

Guojing Road, Luosha Twon, Yuncheng District,

Yunfu City, Guangdong Province.(Beside Stone World)

☎ +86 766-8935666

📠 +86 766-8823887

📍 Guojing Road, Luosha Twon, Yuncheng District,
Yunfu City, Guangdong Province.(Beside Stone World)

📍 Near the Estuary Yongfeng Bridge(Coast stone in the industry),
District yuncheng, Yunfu City.

🌐 <http://www.makishstone.com>

☎ +86 766-8935666

📠 +86 766-8823887

📍 中国.广东省云浮市云城区罗沙过境路(石通天下侧)

📍 广东省云浮市云城区河口永丰桥旁 (海岸石业内)

🌐 <http://www.makishstone.com>

Customer Service

客户服务专线

+86 400-085-6686



LEVANTINA by
MAKISH

☎ Customer Service : +86 400-085-6686
☎ +86 766-8935666
☎ +86 766-8823887
📍 Guojing Road, Luosha Twon, Yuncheng District,
Yunfu City, Guangdong Province.[Beside Stone World]
🌐 <http://www.makishstone.com>

☎ 客服专线: +86 400-085-6686
☎ +86 766-8935666
☎ +86 766-8823887
📍 中国.广东省云浮市云城区罗沙过境路(石通天下侧)
🌐 <http://www.makishstone.com>



LEVANTINA
THE NATURAL STONE COMPANY

MKS 美琦石业
MAKISH STONE